

COLOURSHADE



ASTM E84

NFPA 701

UL 2218 (Class: 4)

Multiknit[®]
INTERNATIONAL



ASTM E84

NFPA 701

UL 2218 (Class: 4)



MADE IN SA



Multiknit
INTERNATIONAL



DECORATIVE SHADE NETTING

Brought to you by



CHOOSE FROM A VARIETY OF DIFFERENT COLOURS
OUR SHADE NET INCORPORATES A KNITTED LOCK STITCH
WITH A MONOFILAMENT AND TWO TYPE YARNS FOR
DEMINSIONAL STABILITY, TEAR AND FRAY RESISTANCE
Our PATTERN GIVES EXCELLENT WEFT AND WARP STABILITY
PROUDLY MANUFACTURED IN SOUTH AFICA



Since 1964



STANDARD PRODUCT RANGE

ASTM E84

NFPA 701

UL 2218 (Class: 4)



MADE IN SA



STANDARD PRODUCT RANGE



	TOP	BOTTOM
Black		
Bush Khaki		
Charcoal		
Chocolate		
Cinnamon		
Desert Sand		
Navy Blue		



	TOP	BOTTOM
Rain Forest Green		
Red		
Royal Blue		
Rust Gold		
Silver		
Terracotta		



NON-STANDARD PRODUCT RANGE

ASTM E84

NFPA 701

UL 2218 (Class: 4)



MADE IN SA



NON-STANDARD PRODUCT RANGE



	TOP	BOTTOM
Acacia		
Arizona		
Atomic Orange		
Electric Purple		
Laguna Blue		
Mulberry		

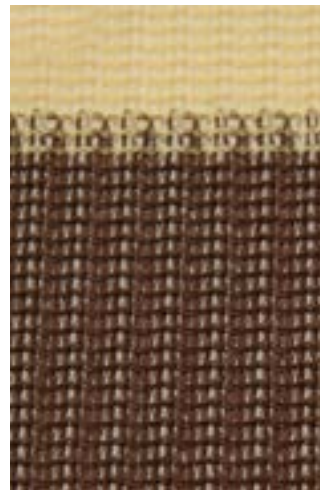


Olive		
Red Earth		
Sunflower Yellow		
Turquoise		
White		
Zesty Lime		

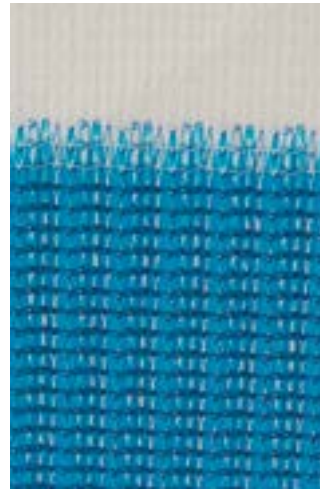
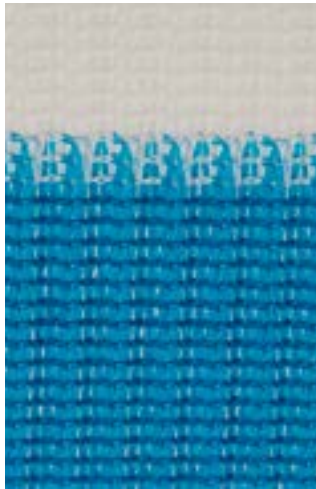
Brown/Beige

TOP

BOTTOM



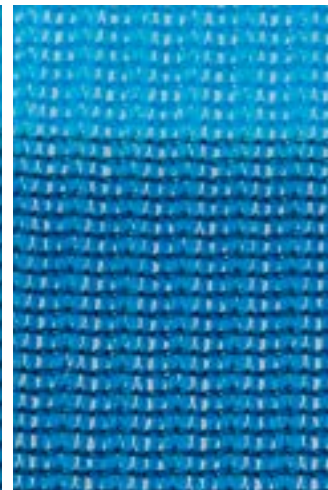
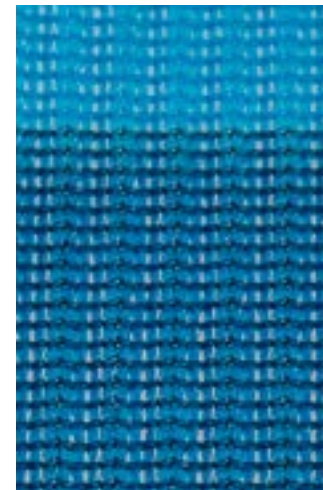
Blue/White



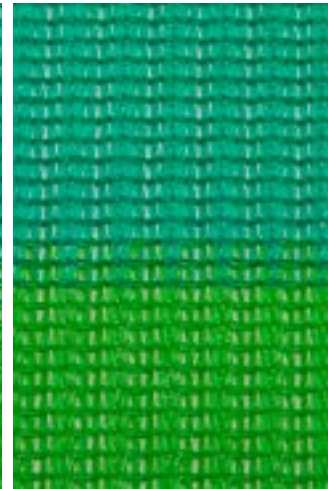
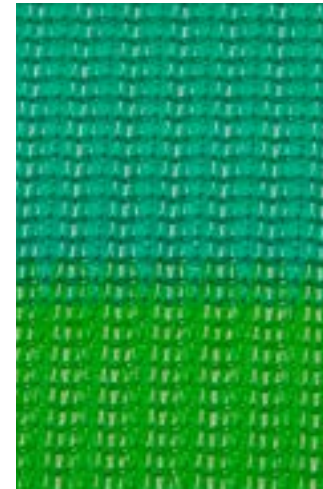
2 Tone Blue

TOP

BOTTOM



2 Tone Green





ASTM E84

NFPA 701

UL 2218 (Class: 4)



MADE IN SA



COLOURSHADE Z25 Standard Range	SHADE FACTOR %	UV BLOCK OUT %
Black	95	96
Bush Khaki	89	93
Charcoal	94	95
Chocolate	92	93
Cinnamon	88	93
Desert Sand	80	92
Navy Blue	90	94
Rain Forest Green	89	96
Red	91	92
Royal Blue	86	94
Rust Gold	90	94
Silver	88	93
Terracotta	84	90
COLOURSHADE Z25 Non-Standard Range		
Acacia	80	95
Arizona	86	91
Atomic Orange	82	94

	SHADE FACTOR %	UV BLOCK OUT %
Electric Purple	84	90
Laguna Blue	92	96
Mulberry	90	91
Olive	93	97
Red Earth	93	97
Sunflower Yellow	70	94
Turquoise	83	92
White	57	86
Zesty Lime	83	92
COLOURSHADE Stripe Range: (New pattern)	SHADE FACTOR %	UV BLOCK OUT %
Beige/Brown	65	90
Blue/White	60	87
Two-Tone Blue	75	83
Two-Tone Green	70	86

Available in:
- 50m rolls and cut lengths
- Standard width: 3m (folded to 1.5m)

TECHNICAL FEATURES

- Colourshade Z25 is a three bar knitted, lockstitch Z pattern, incorporating one monofilament and two type yarns for dimensional stability, tear and fray resistance.
- The fabric his manufactured at our factory, in South Africa, and is made from virgin High-density polyethylene (HDPE).
- The Z pattern gives excellent weft and warp stability, due to extended throw of the weft yarns across the knitting needles during fabrication of the fabric.
- The Z pattern design achieves high density coverage with the weft yarns, giving up to 97% UV block out and exceptional water run off properties.
- The Z25 fabric is heat set using a stentering process, giving additional dimensional stability and strength as a result of shrinking and equalizing the yarn lengths and knots in the three bar lock-stitch pattern.
- The stentering of the Z25 fabric assists in reducing sagging and looseness in the fabric after installation.
- These fabrics are used extensively for large tension structures, carports, shade sails, awnings and other types of shade covers.



Manufacturers of Knitted Agricultural
and Decorative Shade Net Fabrics



www.multiknit.com
Tel: +27 (0)13 7512376
Email: exports@multiknit.co.za
exports1@multiknit.co.za

